

# SHARP

**MX-1810U**

Digital Full Colour Multifunctional System



print | copy | scan | fax | file

**Style. Simplicity. Performance.**

Multifunctional A3 colour  
for the smaller office



# Make a difference with A3 colour

Introducing the compact and stylish 18 pages per minute MX-1810U. Now you can print, copy and scan in full colour, at full speed, with this surprisingly affordable MFP.

We've included all the major functions that every office needs but left it up to you to choose your ideal configuration. So you get everything you need, with no unnecessary extras, in one of the smallest, most space-saving MFPs in its class.

We've put a special emphasis on ease of use. The MX-1810U has a 7.0" colour touch screen control panel with a stylus pen

for easy operation and every major function is intuitive and obvious. There are even 'easy grip' handles on the paper drawers.

It's easy to manage, too, thanks to a Remote Access Control facility for operating, configuring and troubleshooting the MFP from across the office network.

## More choice. Better value

Choose from a wide range of options to create a custom configuration that's exactly right for you. A Reversing Single Pass Feeder makes double-sided scanning and copying quick and easy, for example. And the optional internal hard drive lets you store and reuse documents. And that's not all.

You can also specify a useful fax capability and access to third party software for automating routine office tasks. Whatever you decide, you only have to buy what you really need.

### **Kinder to the environment**

The Energy Star-certified MX-1810U uses Sharp's green technology to support your environmental objectives. Not only does it take only 45 seconds to warm up when you switch it on, but it 'learns' your typical usage patterns and automatically shuts off the power during quiet times. Plus, we've used energy-efficient LED lights in the scanner for lower power consumption. These, and other smart design features give this MFP one of the lowest Typical Electrical Consumption figures in its class.

## Product highlights



Low-energy LED lights



Easy-grip drawer handles



Colour LCD display with Stylus pen



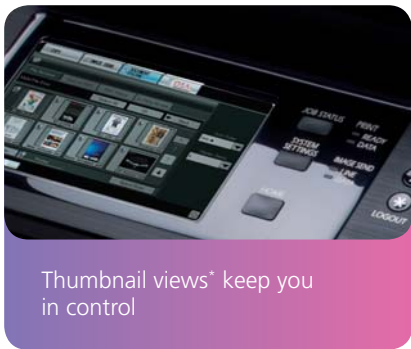
Optional 100-sheet Reversing Single-Pass Feeder

# Everyday Productivity

You'll be surprised at how much more you can do with the MX-1810U. Unlike some MFPs which make you slow down for colour, this powerful, compact machine can print and copy at the full 18 pages per minute. What's more, you can double the effective speed by linking two together\* and sharing jobs between them.

Couple that with fast scan speeds (50 originals per minute) and a first page out time of just 10.2 seconds\*\* (less for black and white pages), and you have a device with more than enough performance to satisfy the whole team.

## Enhanced efficiency



Thumbnail views\* keep you in control

Complex jobs are quickly mastered thanks to the optional 100-sheet Reversing Single-Pass Feeder for rapid doublesided scanning, and you get electronic sorting for collating jobs and keeping them separate. A Job Build function\* lets everyone manage high volume copying with ease, and there's an optional large internal hard disk for storing and retrieving documents.

Walk-up printing from a memory stick is easy, and you can directly print\*\*\* common PDF, TIFF, JPEG and XPS files without taking the time to use a printer driver.

It all adds up to a compact yet surprisingly versatile MFP which will boost productivity across the whole team.

## Excellent image quality

Newly formulated developer and toner delivers enhanced image quality across a useful range of media, and a colour print resolution of 600 x 600 dpi, and 9600 x 600 dpi interpolated adds style and impact to all of your documents. You don't need to be a colour expert to get the best out of the MX-1810U, either. Its Auto Colour Mode takes care

of all the settings for you, producing accurate, high quality copies with faithfully reproduced colour, halftones and fine detail.

There's no fuss and no special features to learn. Just page after page of smart, professional documents for everyday business use.



\* Requires optional MX-HD11. Job build function requires MX-HD11 and MX-RP12.

\*\* Best achieved time based on A4 copy, long-edge feeding from 1st paper drawer, using document glass, when machine is ready, without Auto Colour Mode and Auto Colour Selection. May vary depending on machine conditions and operating environment.

\*\*\* Requires optional MX-PB14 and MX-HD11. PDF direct printing also requires MX-PK11. XPS direct printing also requires MX-PUX1 and MX-SM10.

# Performance enhancing technology

The new MX-1810U incorporates the key performance-enhancing technologies that you'll find in Sharp's other award-winning MFPs, and more.

Full colour scanning is fast and versatile. Originals can be scanned into most popular formats then instantly sent to your desktop, multiple email addresses, a folder on your network or FTP server, or simply a USB memory stick. Plus, there's a handy 'Scan to Me' function for single-touch scanning direct to your own email address.

## Unlocking information across the enterprise

Now you can really put paper-based information to full use, digitizing documents and distributing them as needed. Even high volume scanning is effortless thanks to thoughtful innovations that automatically stamp originals as they're scanned and skip blank pages entirely.

Sharp's OSA Network Scanning Tool Option provides one touch scanning to your PC or network drive. Scanned documents can quickly be printed, filed, previewed, shared and stored, saving time and improving workflows. And if you send a copy to your PC, you can use Sharpdesk document management software, which lets you store and manage files of virtually any format, and even combine them into new multipage documents.

## Convenient filing

With the optional 160GB hard drive you can store jobs (neatly indexed with thumbnail views) for later reuse. Choose from Quick Filing for temporary storage, Advanced Filing for long-term archiving, or a Main Folder for convenient workgroup sharing. You can also store your documents in private, password protected folders.

# Highly configurable

Choose the configuration you need today and add extra options as and when you need them. Expand the paper supply up to 2,100 sheets, add Super G3 and internet fax, add an internal hard drive. It's your choice.



The MX-1810U can also run the latest Sharp OSA® (Open Systems Architecture)\* applications, transforming it into an integrated gateway to your networked business applications. Different applications can be used for automating manual office tasks, such as capturing and distributing documents, or to let you access network applications and data directly from the MFP's front panel.



\* Requires optional MX-HD11 and MX-AMX2 and/or MX-AMX3.

# Security you can trust

The robust, built-in security of the MX-1810U works 24/7 to keep your network and data safe from all unauthorised access, intentional or innocent. Standard security measures include user authentication, Confidential PIN Printing, SSL data encryption, a secure network interface, IEEE 802.1X compliance, IPsec compatibility and password-protected encrypted PDFs.

In addition, the standard Data Initialisation function safely wipes all data from the MX-1810U when it's time to replace it.



The MX-1810U comes with advanced security to protect your information, documents and network.

# Easy to manage

Although the MX-1810U is both powerful and versatile, it's remarkably easy to manage. Every important setting can be configured from a dedicated web page. A glance at the Job Status Screen on the control panel, for example, will show you all copy and print jobs and their position in the queue. But that's just one thoughtful idea. Other ease-of-use innovations include:



### Remote Access Control Panel

Support staff can remotely view\* and operate the front panel display, taking control, changing settings, fixing problems and even providing ad hoc training, without leaving their desks.

### Remote Diagnosis

Solve issues before they become problems by monitoring your MFPs via your web browser, and receive timely email alerts when maintenance is required.



### Printer Status Monitor

Lets you check the MFP's operating status from your PC, so you can make sure there's sufficient toner and paper before you start a job. What's more, as soon as your documents are printed an alert appears on your desktop, saving wasted trips across the office.

### Sharp Remote Device Manager

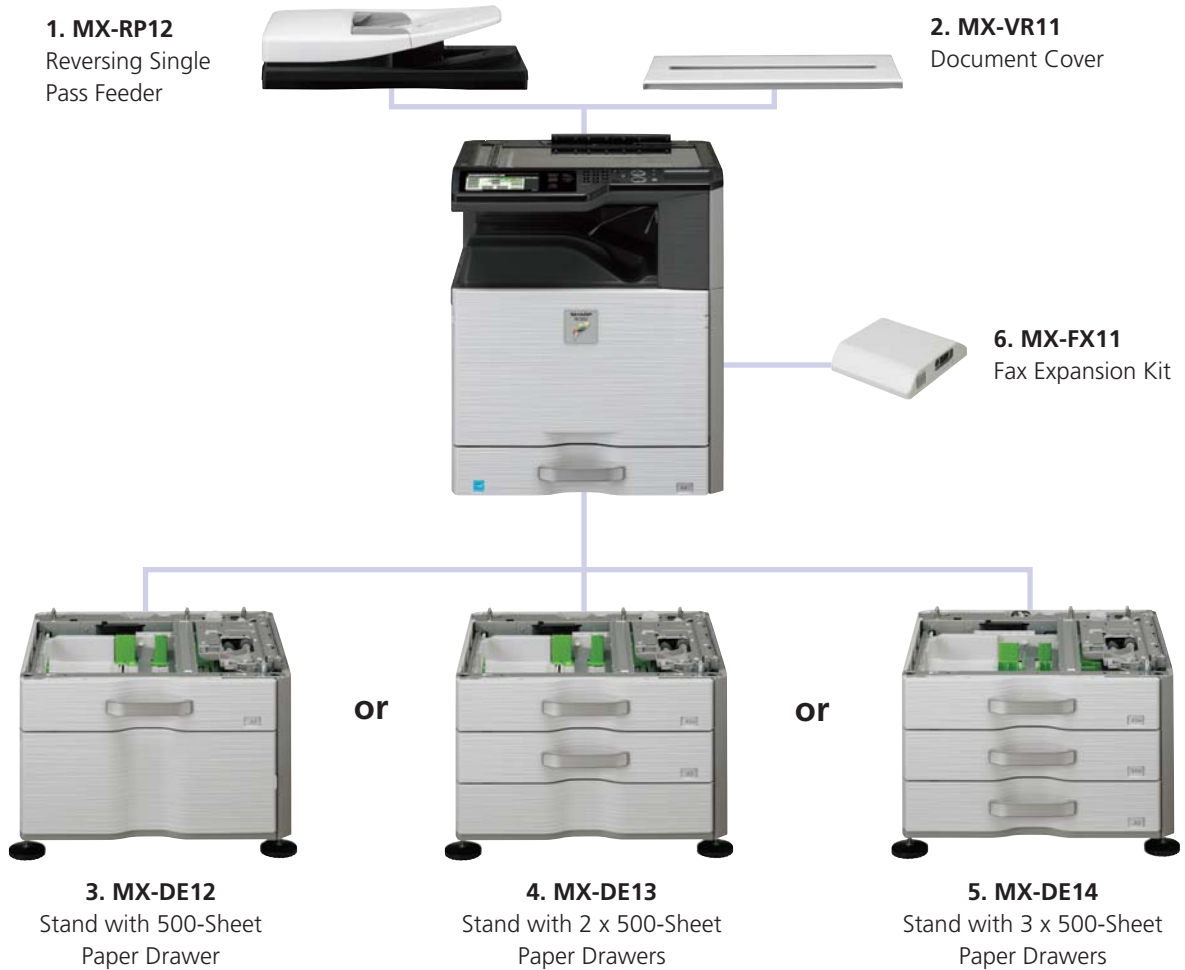
Installed on your file server, Sharp Remote Device Manager (SRDM) gives you complete, real-time control of your printers and MFPs through any standard web browser. Error reporting, technical support, driver installation, firmware upgrades, printer configuration: everything is easier and more accessible.

\* Requires VNC application.



# Options

No two workgroups are exactly alike and everyone has different needs. Choose from these options to configure an MFP that's perfect for your business.



## Configuration examples



## Base Unit

1. **MX-RP12 Reversing Single Pass Feeder**
2. **MX-VR11 Document Cover**
3. **MX-DE12 Stand with 500-Sheet Paper Drawer**  
A3 to A5R, 500 sheets (80 g/m<sup>2</sup>)
4. **MX-DE13 Stand with 2 x 500-Sheet Paper Drawers**  
A3 to A5R, 500 sheets each (80 g/m<sup>2</sup>) for lower and upper trays
5. **MX-DE14 Stand with 3 x 500-Sheet Paper Drawers**  
A3 to A5R, 500 sheets each (80 g/m<sup>2</sup>) for lower and upper trays

## Faxing

6. **MX-FX11 Fax Expansion Kit**  
Super G3 fax module
- MX-FWX1 Internet Fax Expansion Kit**  
(MX-HD11 required)

## Connectivity

### Printing

#### **MX-PB14 Printer Expansion Kit**

Enables PCL6 printing  
(MX-HD11 required)

#### **MX-PK11 PS3 Expansion Kit**

Enables PostScript printing  
(MX-PB14 and MX-HD11 required)

#### **MX-PUX1 XPS Expansion Kit**

(MX-PB14, MX-HD11 and MX-SM10 required)

#### **MX-SM10 Expansion Memory Board**

#### **MX-PF10 Barcode Font Kit**

(MX-PB14 and MX-HD11 required)

#### **MX-HD11**

HDD Expansion Kit

### Scanning

#### **AR-SU1 Stamp Unit**

Marks already scanned documents for checking

### Sharpdesk Licenses

#### **MX-USX1/X5/10/50/A0**

1/5/10/50/100-License Kit

### Sharp OSA®

#### **MX-AMX1 Application Integration Module**

#### **MX-AMX2 Application Communication Module**

#### **MX-AMX3 External Account Module**

(MX-HD11 required)

### Sharp OSA Network Scanner Tool Licenses

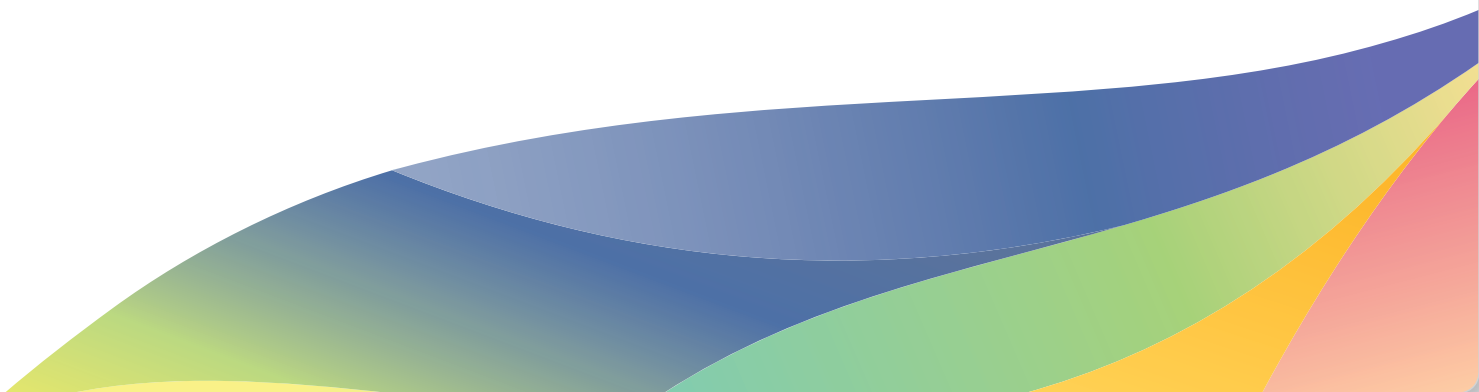
#### **MX-UN01A/05A/10A/50A/1HA**

1/5/10/50/100-License Kit

(MX-AMX2 required)

\*1 A4 or smaller, 80g/m<sup>2</sup>

Some options may not be available in some areas



# Specifications

## MX-1810U

Digital Full Colour Multifunctional System



General		
<b>Engine speed (Max.)</b>	A4	A3
Colour ppm/cpm	18	10
B/W ppm/cpm	18	10
<b>Paper size</b>	Max. A3W, min. A5R	
<b>Paper weight</b>	Drawer: 60 g/m <sup>2</sup> - 209 g/m <sup>2</sup> Bypass: 55 g/m <sup>2</sup> - 256 g/m <sup>2</sup>	
<b>Paper capacity</b>	Standard: 600 sheets (500-sheet drawer and 100-sheet multi-bypass tray) Maximum: 2,100 sheets (4 x 500-sheet drawers and 100-sheet multi-bypass tray)	
<b>Warm-up time**1</b>	45 sec.	
<b>Memory</b>	Standard: Copier/Printer (shared): 1 GB Option: Printer: 1.5 GB Option: 160 GB HDD*2	
<b>Power requirements</b>	Rated local AC voltage $\pm$ 10%, 50/60 Hz	
<b>Power consumption (Max.)</b>	1.84 kW (220 - 240V)	
<b>Dimensions (W x D x H)*3</b>	583 x 623 x 717 mm	
<b>Weight*3</b>	Approx. 65 kg	
Copier		
<b>Original paper size</b>	Max. A3	
<b>First copy time*4</b>	Full colour: 10.2 sec., B/W: 8.8 sec.	
<b>Continuous copy</b>	Max. 999 copies	
<b>Resolution</b>	Scan (colour): 600 x 600 dpi Scan (b/w): 600 x 600 dpi, 600 x 400 dpi, 600 x 300 dpi Print: 600 x 600 dpi, 9600 equivalent*5 x 600 dpi (depending on print mode)	
<b>Gradation</b>	Equivalent to 256 levels	
<b>Zoom range</b>	25 - 400% (25 - 200% using RSPF) in 1% increments	
<b>Preset copy ratios</b>	10 ratios (5R/5E)	
Network Scanner		
<b>Scan method</b>	Push scan (via operation panel), pull scan (TWAIN-compliant application)	
<b>Resolution</b>	Push scan: 100, 200, 300, 400, 600 dpi Pull scan: 75, 100, 150, 200, 300, 400, 600 dpi, 50 - 9600 dpi*5, custom	
<b>File formats</b>	TIFF, PDF, encrypted PDF, JPEG (colour only), XPS*6	
<b>Scanner utilities</b>	Sharpdesk	
<b>Scan destinations</b>	Scan to e-mail, desktop, FTP server, network folder (SMB), USB memory	



<b>Document Filing</b> (optional MX-HD11 required)	
<b>Document filing capacity</b>	Main and custom folders: 20,000 pages*7 or 3,000 files Quick file folder: 10,000 pages*7 or 3,000 files
<b>Stored jobs</b>	Copy, print, scan, fax transmission*8
<b>Storage folders</b>	Quick file folder, main folder, custom folder (max. 1,000 folders)
<b>Confidential storage</b>	Password protection
Network Printer	
<b>Resolution</b>	600 x 600 dpi, 9600 equivalent*5 x 600 dpi
<b>Interface</b>	USB 2.0 10Base-T/100Base-TX
<b>Supported OS*9</b>	Standard: Windows® 2000/XP, Windows® Server 2003/2008, Windows® Vista, Windows® 7 Optional: Mac OS 9.0 - 9.2.2, Mac OS X 10.2.8, 10.3.9, 10.4.11, 10.5 - 10.5.8, 10.6 - 10.6.5
<b>Network protocols*9</b>	TCP/IP (IPv4, IPv6), IPX/SPX (NetWare), NetBEUI, EtherTalk (AppleTalk)
<b>Printing protocols</b>	LPR, Raw TCP (port 9100), POP3 (e-mail printing), HTTP, Novell Printserver application with NDS and Bindery, FTP for downloading print files, EtherTalk printing, IPP
<b>PDL emulation</b>	Standard: Sharp Advanced Printing Language -c Option*10: PCL6, PS3, XPS
<b>Available fonts</b>	80 fonts for PCL, 136 fonts for PS3 emulation*9

B/W Facsimile (optional MX-FX11 required)	
<b>Compression method</b>	MH/MR/MMR/JBIG
<b>Communication protocol</b>	Super G3/G3
<b>Transmission time</b>	Less than 3 sec.*11
<b>Modem speed</b>	33,600 bps - 2,400 bps with automatic fallback
<b>Transmission resolution</b>	Standard: 203.2 x 97.8 dpi Ultra Fine: 406.4 x 391 dpi
<b>Recording width</b>	A3 - A5
<b>Memory</b>	512MB, max. 1GB*12
<b>Grey scale levels</b>	Equivalent to 256 levels

- \*1: At rated voltage. May vary depending on machine conditions and operating environment.  
 \*2: Optional MX-HD11 required. 1GB = One billion bytes when referring to hard drive capacity. Actual formatted capacity is less.  
 \*3: Including document cover.  
 \*4: Best achieved time based on A4 copy, long-edge feeding from 1st paper drawer, using document glass, when machine is ready, without Auto Colour Mode and Auto Colour Selection. May vary depending on machine conditions and operating environment.  
 \*5: Resolutions higher than 600 dpi are interpolated.  
 \*6: To view XPS files on PCs not running Windows Vista, you must have the XPS View application installed.  
 \*7: Measured using Sharp's standard chart (A4 with 6% coverage, B/W). The Quick Folder shares memory with the Job Build function; The storage capacity will be less for colour pages.  
 \*8: Optional MX-FX11 required.  
 \*9: Optional MX-PK11 required for Mac OS, EtherTalk and PS3.  
 \*10: PCL requires optional MX-HD11 and MX-PB14. PS requires optional MX-HD11, MX-PK11 and MX-PB14. XPS requires optional MX-HD11, MX-PUX1, MX-PB14 and MX-SM10 (1GB).  
 \*11: Based on Sharp's standard chart with approx. 700 characters (A4 portrait) at standard resolution in Super G3 mode, 33,600 bps, JBIG compression.  
 \*12: Optional MX-HD11 required.



# SHARP

Design and specifications are subject to change without prior notice. All information was correct at time of print. The ENERGY STAR logo is a certification mark and may only be used to certify specific products that have been determined to meet the ENERGY STAR programme requirements. ENERGY STAR is a US registered mark. The ENERGY STAR guidelines apply to products only in the US, Europe, Australia, New Zealand and Japan. Windows, Windows XP and Windows Vista are registered trademarks of Microsoft Corporation. All other company names, product names and logos are trademarks or registered trademarks of their respective owners.  
 ©Sharp Corporation June 2011 Ref: MX-1810U. All trademarks acknowledged. E&OE.